



Hedge Lane, Palmers Green, London, N13
Offers In Excess Of £825,000 Freehold

Anthony Webb
ESTATE AGENTS

Hedge Lane, Palmers Green, London, N13

A rare INVESTMENT opportunity to purchase two CHAIN FREE self contained converted maisonettes in the same 1930s property. This arrangement could suit family members wishing to combine the benefits of living in close proximity and maintaining separate households. Alternatively the property could be converted back to a large family home or rented out as an investment as they currently are. The two flats combined currently rent for £40,800 per annum

The property is ideally located for Palmers Greens shops, restaurants, bus routes and mainline station into Moorgate. Southgate underground station is a short ride away via the W6 bus route.

The well presented ground floor two bedroom flat consists of its own entrance, a spacious living room opening to a fitted kitchen with doors to garden, a bathroom, a large bedroom to front with bay window, second bedroom with en-suite dressing area/study and own private rear garden.

The first floor three bedroom flat consists of its own entrance, generous living/kitchen space, two double bedrooms, a single bedroom, a modern bathroom, loft space with potential to convert, parking space and garage.

Enfield council tax band C-Ground flat
Enfield council tax band D-First floor flat

- Two double bedrooms
- Ground floor maisonette
- Living room
- Modern kitchen/diner
- Bathroom
- Double glazing/gas central heating
- Own front door
- Private rear garden



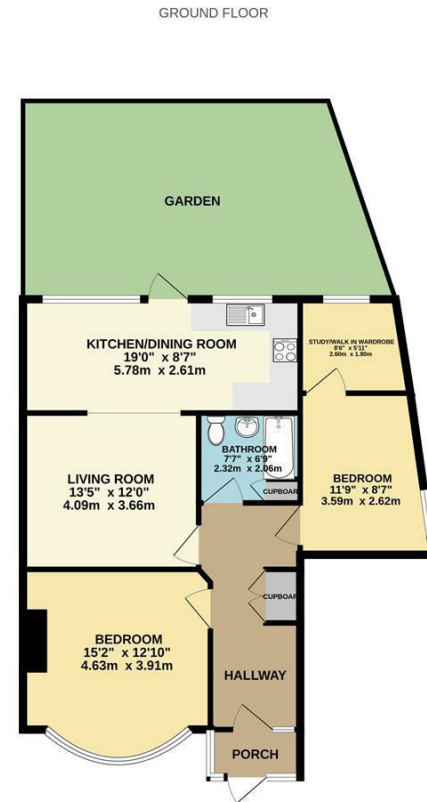


Hedge Lane Palmers Green London N13 5SL

Tenure: Freehold
Gross Internal Area: sq ft



Energy Efficiency Rating		Current	Potential
Very energy efficient - lower running costs			
(92 plus) A			
(81-91) B			
(69-80) C		73	78
(55-68) D			
(39-54) E			
(21-38) F			
(1-20) G			
Not energy efficient - higher running costs			
England & Wales		EU Directive 2002/91/EC	
Environmental Impact (CO ₂) Rating		Current	Potential
Very environmentally friendly - lower CO ₂ emissions			
(92 plus) A			
(81-91) B			
(69-80) C			
(55-68) D			
(39-54) E			
(21-38) F			
(1-20) G			
Not environmentally friendly - higher CO ₂ emissions			
England & Wales		EU Directive 2002/91/EC	



TOTAL FLOOR AREA: 850sq.ft. (79.0 sq.m.) approx.
While every attempt has been made to ensure the accuracy of the floorplan contained here, measurements of doors, windows, rooms and any other items are approximate and no responsibility is taken for any error, omission or mis-statement. This plan is for illustrative purposes only and should be used as such by any prospective purchaser. The services, systems and appliances shown have not been tested and no guarantee as to their operability or efficiency can be given.
Made with Metropix ©2023

Property particulars as supplied by Anthony Webb Estate Agents are set out as a general outline in accordance with the Property Misdescriptions Act (1991) only for the guidance of intending purchasers of lessees, and do not constitute any part of an offer or contract. Details are given without any responsibility, and any intending purchasers, lessees or third parties should not rely on them as inspection or otherwise as to the correctness of each of them. We have not carried out a structural survey and the services, appliances and specific fittings have not been tested. All photographs, measurements, floor plans and distances referred to are given as a guide only and should not be relied upon for the purchase of carpets or any other fixtures statements or representations of fact, but must satisfy themselves by or of fittings, gardens, roof terraces, balconies and communal gardens as well as tenure and lease details cannot have their accuracy guaranteed for intending purchasers. Lease details, service ground rent (where applicable) are given as a guide only and should be checked and confirmed by your solicitor prior to exchange of contracts. no person in the employment of Anthony Webb has any authority to make any representation or warranty whatever in relation to this property.

348 Green Lanes, Palmers Green, London N13 5TJ
020 8882 7888
palmersgreen@anthonywebb.co.uk
anthonywebb.co.uk

Anthony Webb
ESTATE AGENTS